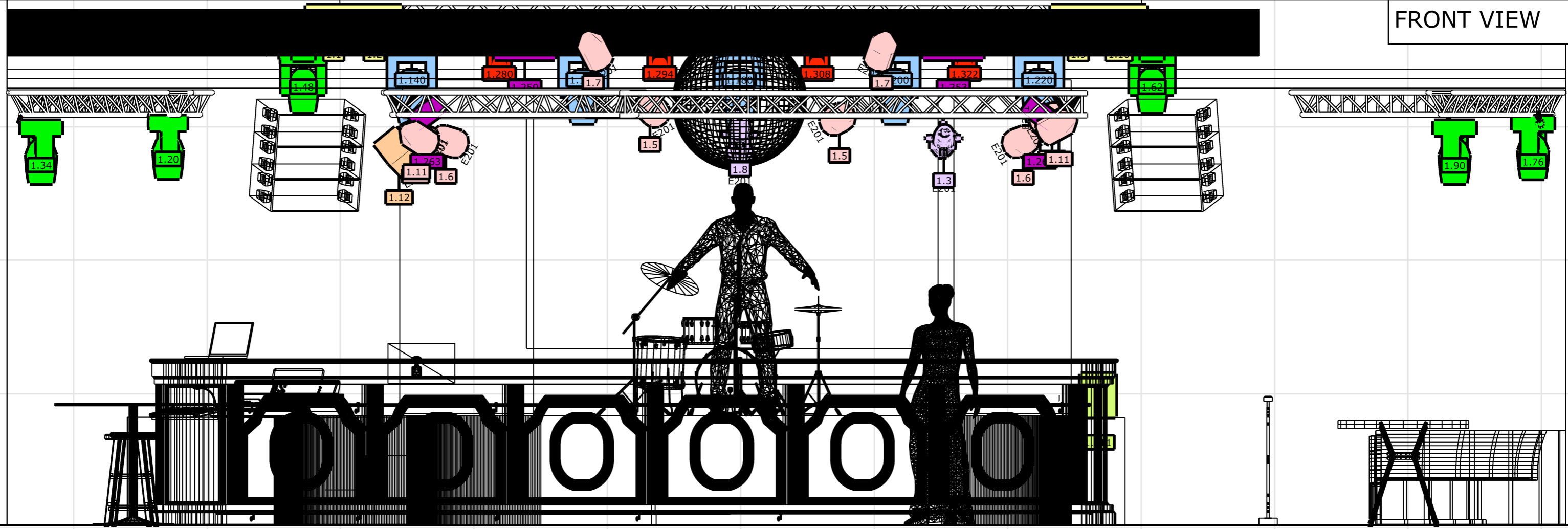


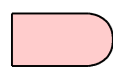

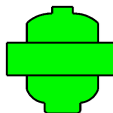

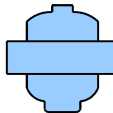
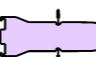
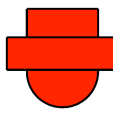
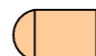
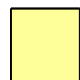
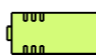
# LIGHT @ 16 TONS CLUB MOSCOW Presnja 2025



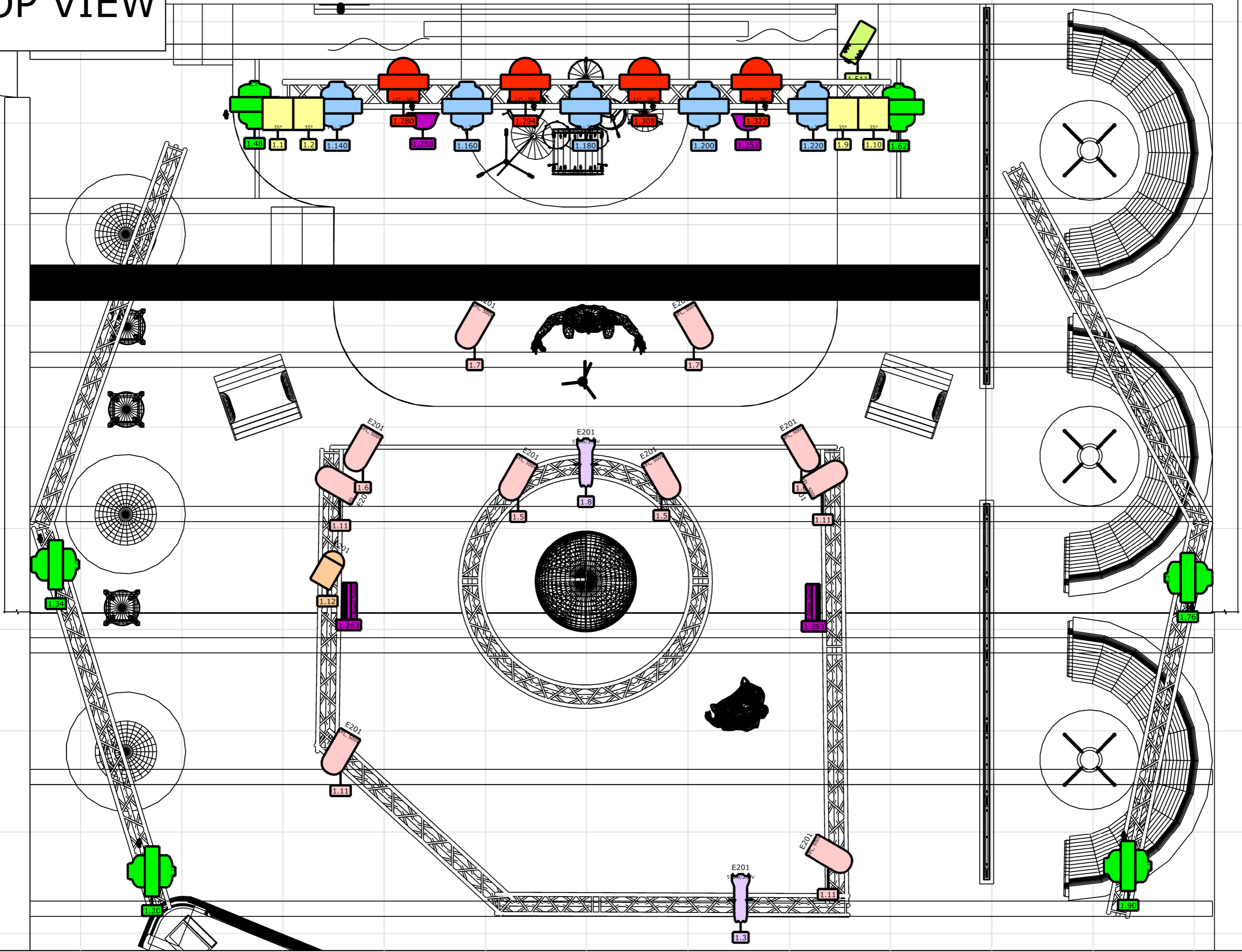
FRONT VIEW



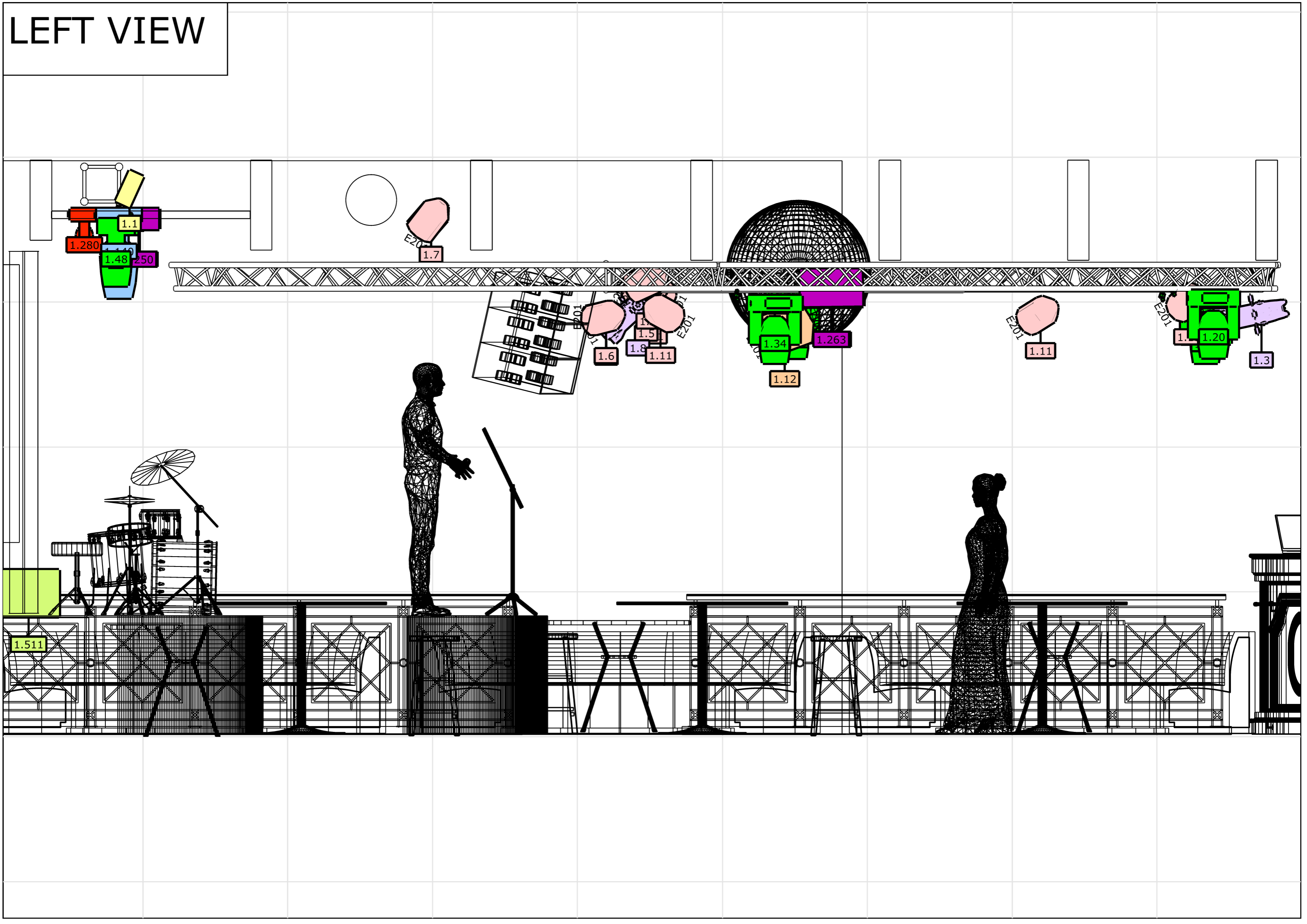
## LEGEND:

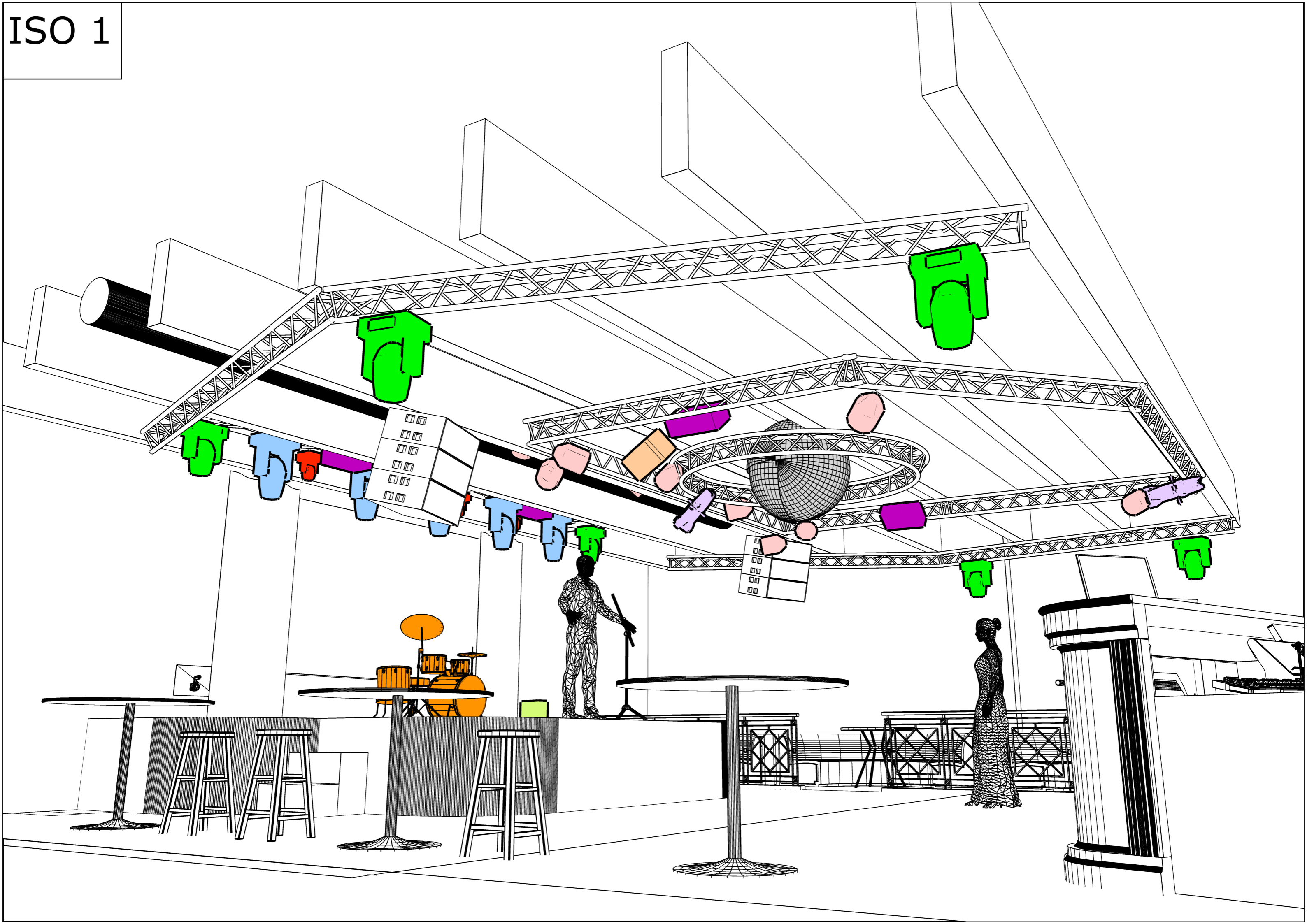
- |  |                                    |   |   |
|--|------------------------------------|---|---|
|  | DTS<br>PAR 56 -300Wt (10)          |  | INVOLIGHT<br>LED Strobe 500                       |
|  | INVOLIGHT<br>LEDMH140B (6)         |  | MARTIN<br>Atomic 3000 (2)                         |
|  | INVOLIGHT<br>TRINITY150LED (5)     |  | ETC<br>Source Four Jr 26°, Source Four Jr 36° (2) |
|  | INVOLIGHT<br>LEDMH720W (4)         |  | Art SPOT PC 500Wt (1)                             |
|  | DTS<br>Audience Blinder 2 eyes (4) |  | ANTARI<br>Z-350 Fazer (1)                         |

# TOP VIEW



# LEFT VIEW





ISO 2



# DMX CHANNELS (PATCH LIST) @ 16 TONS CLUB 2025

#	Head name	DMX	Head type	Gel
1	Audience Blinder 2 X 650 Left	1-001	Audience Blinder 2 X 650	
2	Audience Blinder 2 X 650 Left	1-002	Audience Blinder 2 X 650	
3	ETC Source Four Jr 26°	1-003	ETC Source Four Jr 26°	201
4	PAR-56 X 2	1-004	PAR-56	201
5	PAR-56 X 2	1-005	PAR-56	201
6	PAR-56 X 2	1-006	PAR-56	201
7	PAR-56 X 4	1-007	PAR-56	152
8	ETC Source Four Jr 36°	1-008	ETC Source Four Jr 36°	201
9	Audience Blinder 2 X 650 Right	1-009	Audience Blinder 2 X 650	
10	Audience Blinder 2 X 650 Right	1-010	Audience Blinder 2 X 650	
11	PAR-56 X 4	1-011	PAR-56	Frost
12	PC ART SPOT-500Wt	1-012	PC Art SPOT-500Wt	201
13	Involight LED MH140B 14 ch Front left	1-020	Led Beam MH140B	Wheel
14	Involight LED MH140B 14 ch Front left	1-034	Led Beam MH140B	Wheel
15	Involight LED MH140B 14 ch Back left	1-048	Led Beam MH140B	Wheel
16	Involight LED MH140B 14 ch Back right	1-062	Led Beam MH140B	Wheel
17	Involight LED MH140B 14 ch Front right	1-076	Led Beam MH140B	Wheel
18	Involight LED MH140B 14 ch Front right	1-090	Led Beam MH140B	Wheel
19	Involight LED MH140B 14 ch Floor Optional	1-104	Led Beam MH140B	Wheel
20	Involight LED MH140B 14 ch Floor Optional	1-118	Led Beam MH140B	Wheel
21	Involight TRINITY 150 LED 20 ch Back	1-140	Led MH Spot/Wash/Beam	Wheel
22	Involight TRINITY 150 LED 20 ch Back	1-160	Led MH Spot/Wash/Beam	Wheel
23	Involight TRINITY 150 LED 20 ch Back	1-180	Led MH Spot/Wash/Beam	Wheel
24	Involight TRINITY 150 LED 20 ch Back	1-200	Led MH Spot/Wash/Beam	Wheel
25	Involight TRINITY 150 LED 20 ch Back	1-220	Led MH Spot/Wash/Beam	Wheel
26	Involight LED STROB 500 3 ch Back left	1-250	Led Strob	
27	Involight LED STROB 500 3 ch Back right	1-253	Led Strob	
28	Martin Atomic 3000 3 ch Hall left	1-260	Strob	
29	Martin Atomic 3000 3 ch Hall right	1-263	Strob	
30	Involight LED MH 720 W 14 ch Back	1-280	Led Wash MH720W	RGB+W
31	Involight LED MH 720 W 14 ch Back	1-294	Led Wash MH720W	RGB+W
32	Involight LED MH 720 W 14 ch Back	1-308	Led Wash MH720W	RGB+W
33	Involight LED MH 720 W 14 ch Back	1-322	Led Wash MH720W	RGB+W
34	ANTARI Z-350 FAZER Haze Floor	1-511	Smoke Machine Fazer	
35	ANTARI Z-350 FAZER Fan Floor	1-512	Smoke Machine Fazer	

**CONTROL (FOH LEFT):  
CHAMSYS MAGIC Q PC WING COMPACT**



**Художник по свету – Руслан Ибрагимов  
Light director - Ruslan Ibragimov**



**+7 (916) 673-87-95**



**rus16tons@yandex.ru**